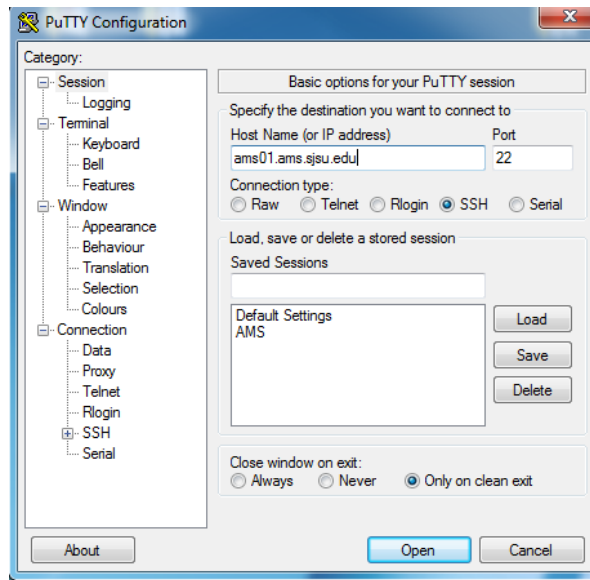


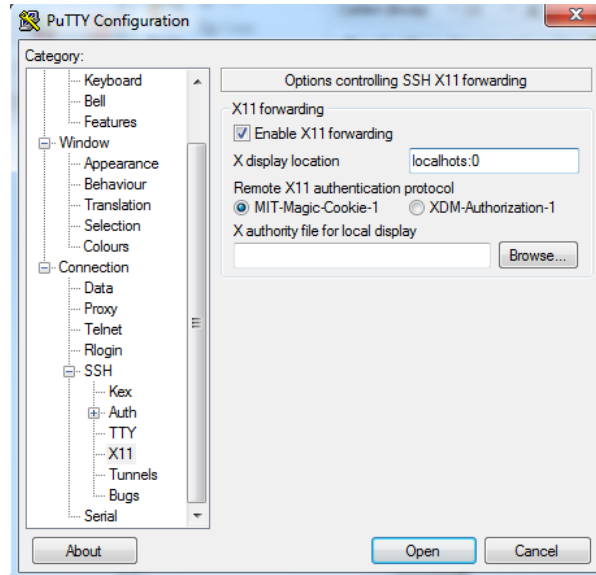
X FORWARDING WITH PUTTY ON WINDOWS¹

- I. Download PUTTY from (<http://www.putty.org/>) for SSH Client
- II. Download Xming from (<http://www.straightrunning.com/XmingNotes/>) for X Server
- III. Putty Configuration
 1. Add unix/linux hostname
 2. Switch Protocol to SSH
 3. Type name of session in saved sessions
 4. Click 'Save'



5. In “connection”, expand the 'SSH' tab from the 'Category' list
6. Choose 'X11' from 'SSH' list
7. Check 'Enable X11 Forwarding'
8. Type “localhost:0” in the X display location

¹ Originally from University of Minnesota



9. Choose 'Session' from 'Category' list
10. Click 'Save'

IV. Configuring XMING

1. Just run "All Programs > Xming Xming" and it should work if you've got PuTTY configured.

V. Connecting

1. Start Xming
2. Start Putty
3. Double click on the saved session you want
4. Enter username and password as requested

